



We craft ceramic fiber casting technology
casting Industry solutions

Establish Solutions & Creating Value

PANSHUL INDUSTRIES INDIA PVT. LTD.™



PRODUCT CATALOGUE



INSULATION PRODUCT | MACHINE I FILTERS |
POURING SYSTEM | PRE- CAST SHAPE | COATING
METAL CLEANING

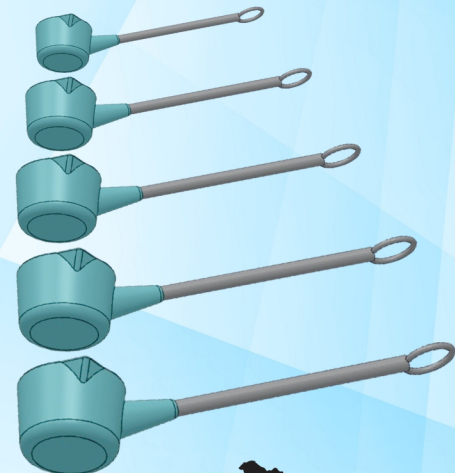
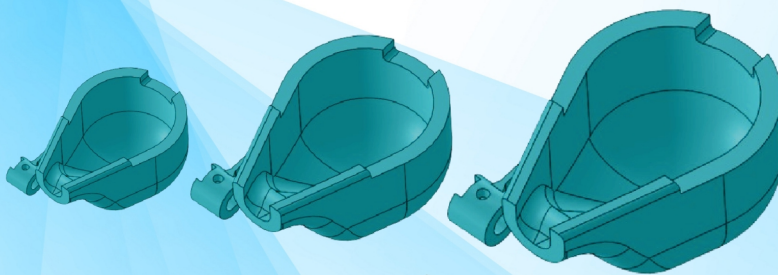
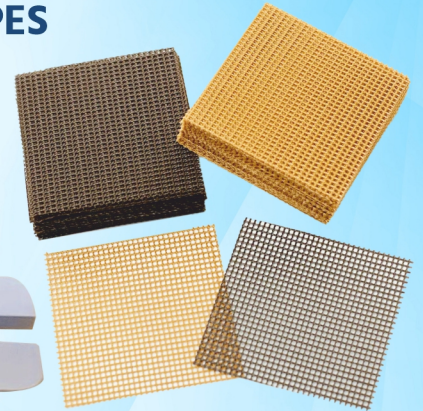
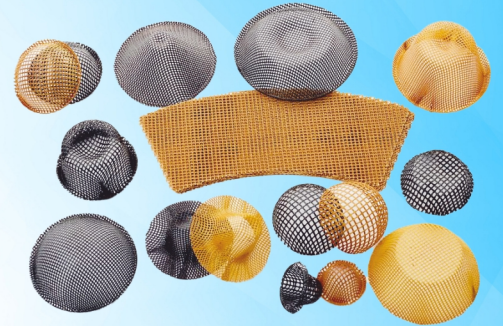
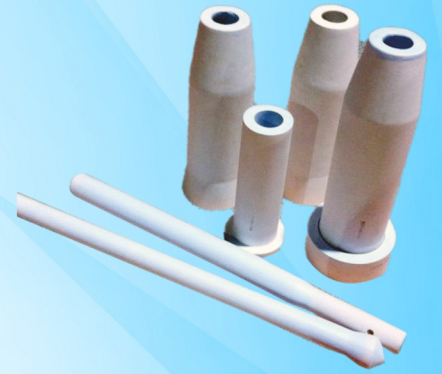


**AATMA-NIRBHAR
BHARAT**

www.panshulindustries.com

CONTENTS

1. ABOUT PANSHUL INDUSTRIES
2. OUR MISSION
3. OUR VISION
4. OUR VALUES
5. EXPERIENCE AND TECHNOLOGY
6. CERAMIC INSULATION PRODUCTS
7. MOLTEN METAL HANDLING DEVICE
8. CERAMIC REFRACTORY PRE - CAST SHAPES
9. PISPM (SPECIAL PURPOSE MACHINES)
10. FILTRATION PRODUCT
11. OUR FACILITIES
12. CONTACT INFORMATION



1. About PANSHUL INDUSTRIES

Panshul Industries India Private Limited Company Products have a very wide range of applications. They are widely used in metallurgical and casting industry of nonferrous and ferrous Industries. Panshul 's products are manufactured with quite powerful processing engineering and very advanced producing technology. We are a diverse Panshul Team of highly trained engineers and technical manufacturing experts serving in the best interests of our many industry partners. It all starts by making it a priority to have our people working and serving in our customers' plants. We believe a customer is best served when we know them well-face-to-face in meetings, shoulder-to-shoulder on the plant floor. Trusted partners go beyond making the right equipment and parts, or engineering a perfect working solution. Serving them best means we're there long after a deal is made to ensure maximum product life and performance. Our work will always be inspired by the customers we know well. Honest and genuine in our relationships. Curious, innovative, and sound in our approach.

2. OUR MISSION

"At Panshul Industries India Private Limited Company, our mission is to pioneer excellence in ceramic innovation, providing cutting-edge solutions that redefine industry standards. We are committed to delivering high-performance ceramic products that not only meet but exceed the expectations of our clients. Guided by a relentless pursuit of quality and sustainability. We aim to empower industries with durable, precision-engineered ceramics. Our mission extends beyond products; we aspire to forge lasting partnerships, contribute to technological advancements, and leave a positive imprint on the global landscape through our commitment to craftsmanship, integrity, and environmental responsibility."

3. OUR VISION

"At Panshul Industries India Private Limited Company, our vision is to be the global leader in ceramic innovation, setting the benchmark for quality and sustainability. We envision a future where our cutting-edge ceramic solutions not only elevate industry standards but also contribute significantly to advancements in technology and environmental stewardship. Through unwavering dedication to research, development, and ethical practices, we aim to be the preferred choice for businesses seeking durable, high-performance ceramics. Our vision extends to fostering a world where the transformative power of ceramics enhances efficiency, sustainability, and progress across diverse sectors, leaving an enduring legacy for generations to come."

4. OUR VALUES

4A. Customer is First

Our mission is to serve customers and exceed their expectations.

4B. Constant Improvement

We constantly seek a better way and we use good ideas from anyone (Inside and outside of Panshul).

4C. Stretch Thinking

We set high goal for ourselves and expect to achieve them.

4D. Quality, Cost, Speed

We focus on quality, cost, and speed in the service of our customers.

4E. Safety

Never compromise on safety.

4F. Entrepreneurial Spirit

We focus on the "how." We are committed to innovation.

We Sacrifice towards action.

4G. Attack Problems, Not People

Fact-based decision-making without personal biases and

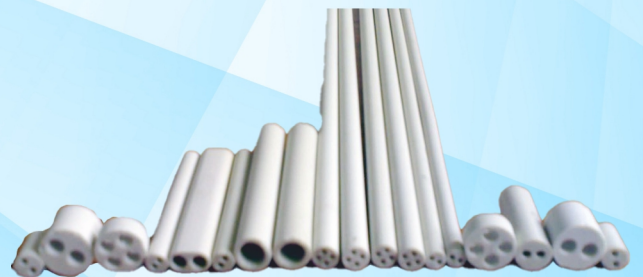
5. EXPERIENCE AND TECHNOLOGY

- Consumables • Engineered System • Engineering Services
- Research and Development • Technical Support

6. CERAMIC INSULATION PRODUCTS



➡ Ceramic fiber Tap Out Cone Customized shapes



➡ Ceramic Customized Tubers & Pipes etc.

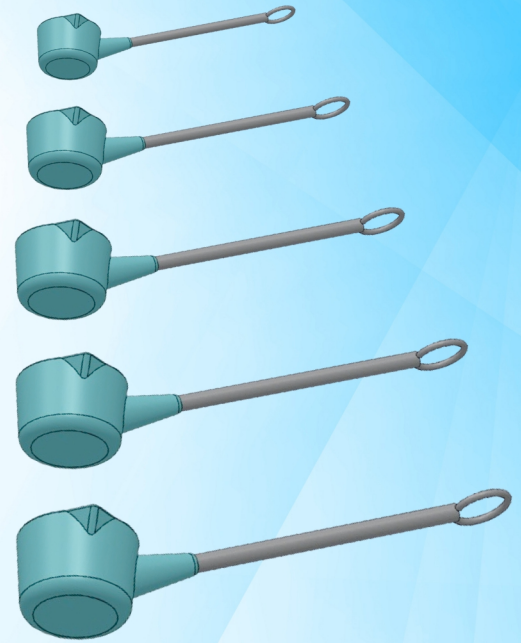
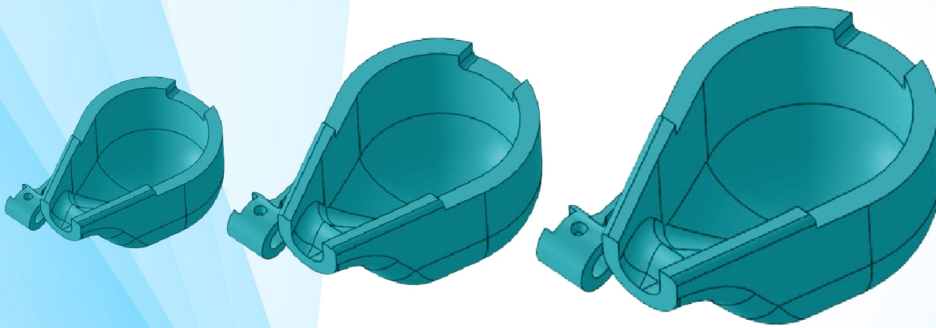


- ➡ Ceramic Sprue Cup
- ➡ Ceramic Sprue bush
- ➡ All Ceramic Insulation Products

MAJOR BENEFITS

- ➔ Custom design available
- ➔ Better durability and reduced reactivity with molten metals enhancing over all safety and performance in metal casting processes.
- ➔ Heat resistance to Corrosion and reduced reactivity with molten metal
- ➔ No iron contamination
Minimal preheating to remove surface moisture
Better performance, Better life and more durable.

7. MOLTEN METAL HANDLING DEVICE

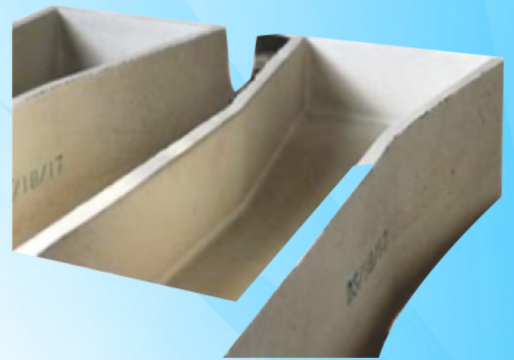
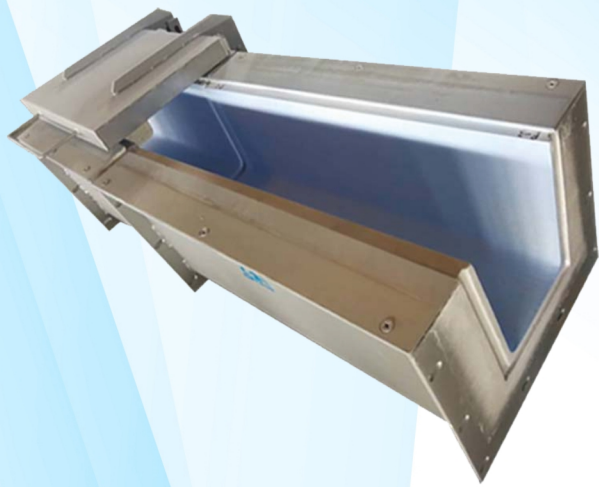


- ➔ Molten Metal Handling PICFM Products
- ➔ Ceramic Hand Spoons / Ladles
- ➔ All Type Ceramic Launderers
- ➔ Ceramic Feeder Tubes and Degassing Baffles Plate
- ➔ Ceramic Pouring Funnels and Saucers
- ➔ PICFM Thermocouple Protection Tube

8. CERAMIC REFRACTORY PRE-CAST SHAPES



- ➔ Metal Transfer Ladles Crucibles
- ➔ Metal Transfer Launderers
- ➔ Ceramic Refractory Funnels/Hoppers
- ➔ Refractory Pre-cast Design Products
- ➔ Degassing Baffles, Degassing Tubes
- ➔ Ceramic Refractory Spout
- ➔ Ceramic Refractory Funnels



9. PISPM™ (SPECIAL PURPOSE MACHINES)

- ➔ Aluminium dross recovery Machines
- ➔ Molten Metal Degassing Machines,
- ➔ Molten Metal Ladle Burners
- ➔ Metal Melting & Holding Furnace

- ➔ Coating Mixer Machine
- ➔ Flux injection Machines



10. FILTRATION PRODUCT

- ➔ Panshul can give fabrics in any width, cut pieces of different sizes or shapes are also available.
- ➔ And Can be customized as per Customer requirement.
- ➔ Fiber Glass Cloth Filter For Aluminium Filtration.



MAJOR BENEFITS

- ➔ Improve the quality of the castings by effectively removing impurities and unwanted particles from the molten metal
- ➔ Low Cost
- ➔ Alloy Varieties are easy to replace
- ➔ Easy to install
- ➔ Extended tool life
- ➔ Reduced Casting Defects
- ➔ Enhanced flow control

11. Our Facilities

"At Panshul Industries India Private Limited Company, we boast state-of-the-art facilities designed to optimize efficiency and quality across our operations. Our manufacturing plant features cutting-edge machinery, ensuring precision and reliability in the production of our ceramic products. With a commitment to sustainability, our facilities incorporate eco-friendly practices, and our dedicated team works in a collaborative environment that fosters innovation and excellence. Explore our advanced facilities, where technology meets craftsmanship to deliver exceptional ceramic solutions."





CONTACT INFORMATION

Website : www.panshulindustries.com
customersupport@panshulindustries.com
info@panshulindustries.com
rk.raiya@panshulindustries.com

Register office/Corporate office :
 Japanese Zone, Kali Pahadi, Near Y-Tech Company
 Neemrana, (Kotputli-Behror)
 Rajasthan, 301705 India
 Mob.: 9887393939, 8287989898



**AATMA-NIRBHAR
BHARAT**